

NJSOC Cabin Inspection Form

School: \_\_\_\_\_

Cabin: \_\_\_\_\_

The Facilities at the New Jersey School of Conservation are inspected for damages prior to your departure. There will be a minimum charge of \$50.00 for any damages that occur as a result of misuse of the facility. To protect you from being held responsible for damages, the building you are staying in should be inspected as soon as you arrive. Not any damage on this form and return it to the NJSOC business office as soon as possible on the morning of your arrival.

This checklist will guide you when checking for damages:

Mattresses

Beds

Bunk ladders

Clothes rods

Curtains

Doors

Fire extinguishers

Furnace ducts/pipes/grills

Light bulbs and fixtures

Mirrors

Screens

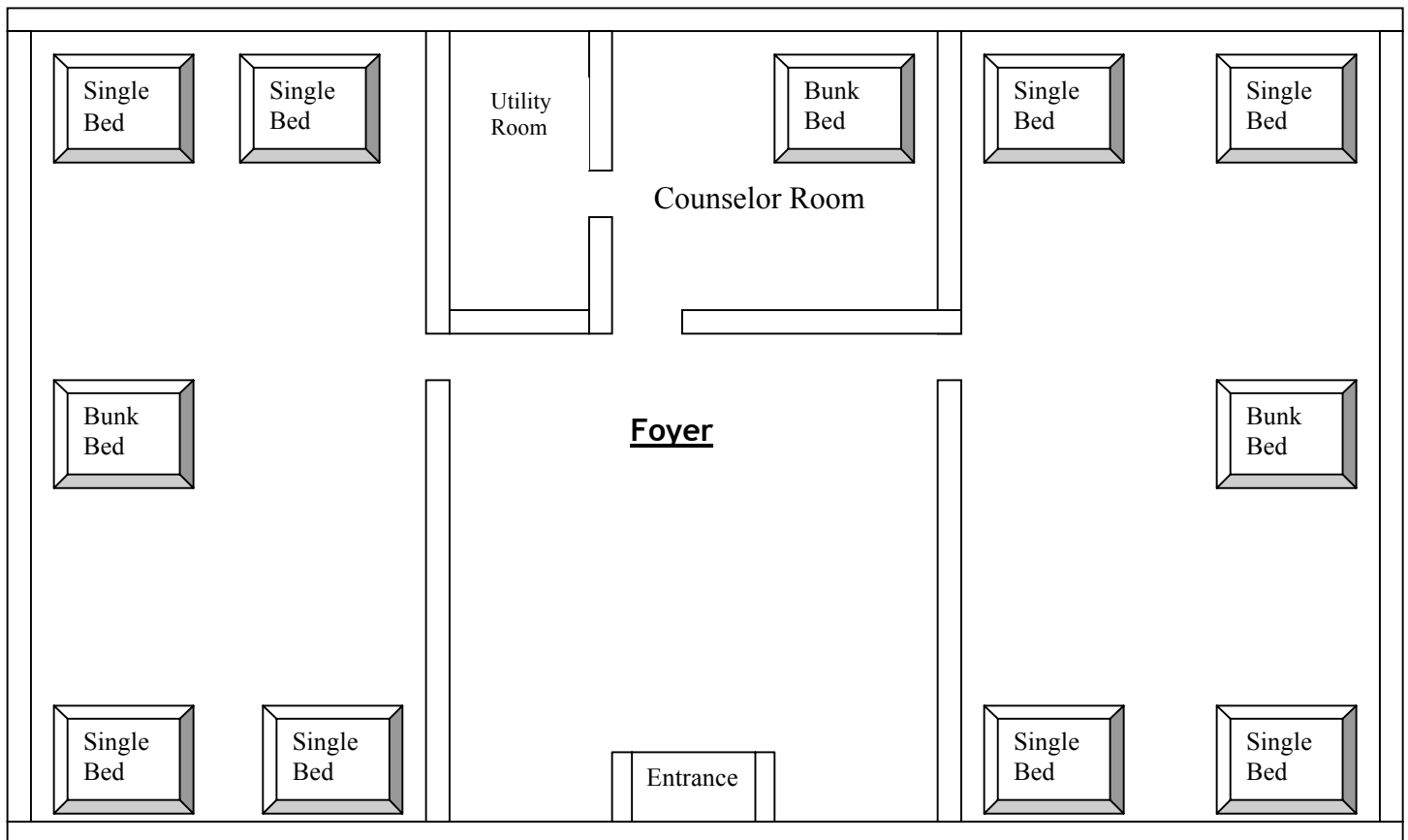
Windows

Shelves

Thermostat

Walls, Ceilings, Woodwork

Graffiti



## NJSOC Seneca Lodge Inspection Form

The Facilities at the New Jersey School of Conservation are inspected for damages prior to your departure. There will be a minimum charge of \$50.00 for any damages that occur as a result of misuse of the facility. To protect you from being held responsible for damages, the building you are staying in should be inspected as soon as you arrive. Not any damage on this form and return it to the NJSOC business office as soon as possible on the morning of your arrival.

This checklist will guide you when checking for damages:

Mattresses

Beds

Bunk ladders

Clothes rods

Curtains

Doors

Fire extinguishers

Furnace ducts/pipes/grills

Light bulbs and fixtures

Mirrors

Screens

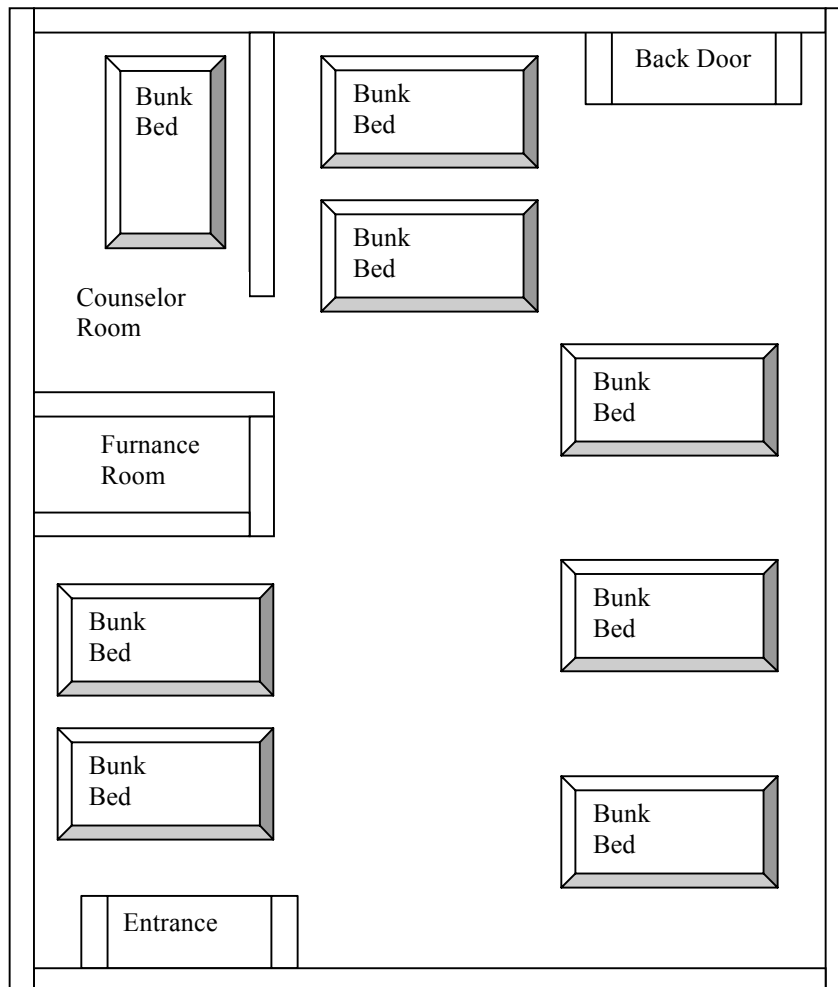
Windows

Shelves

Thermostat

Walls, Ceilings, Woodwork

Graffiti



## NJSOC Lenape Inspection Form

The Facilities at the New Jersey School of Conservation are inspected for damages prior to your departure. There will be a minimum charge of \$50.00 for any damages that occur as a result of misuse of the facility. To protect you from being held responsible for damages, the building you are staying in should be inspected as soon as you arrive. Not any damage on this form and return it to the NJSOC business office as soon as possible on the morning of your arrival.

This checklist will guide you when checking for damages:

Mattresses

Beds

Bunk ladders

Clothes rods

Curtains

Doors

Fire extinguishers

Furnace ducts/pipes/grills

Light bulbs and fixtures

Mirrors

Screens

Windows

Shelves

Thermostat

Walls, Ceilings, Woodwork

Graffiti

