



iPod 101



Overview



■ Basics

- Charging, On/Off/Hold, Navigating, Menu Options
- Personalizing and navigating

■ Other iPod Uses

- Portable hard drive, Slideshows, Alarm Clock, Contacts Manager, Voice Memos, etc

■ Accessories

- Speakers, cables, transmitters, etc



Charging

Included USB cable



Other Ways to Charge

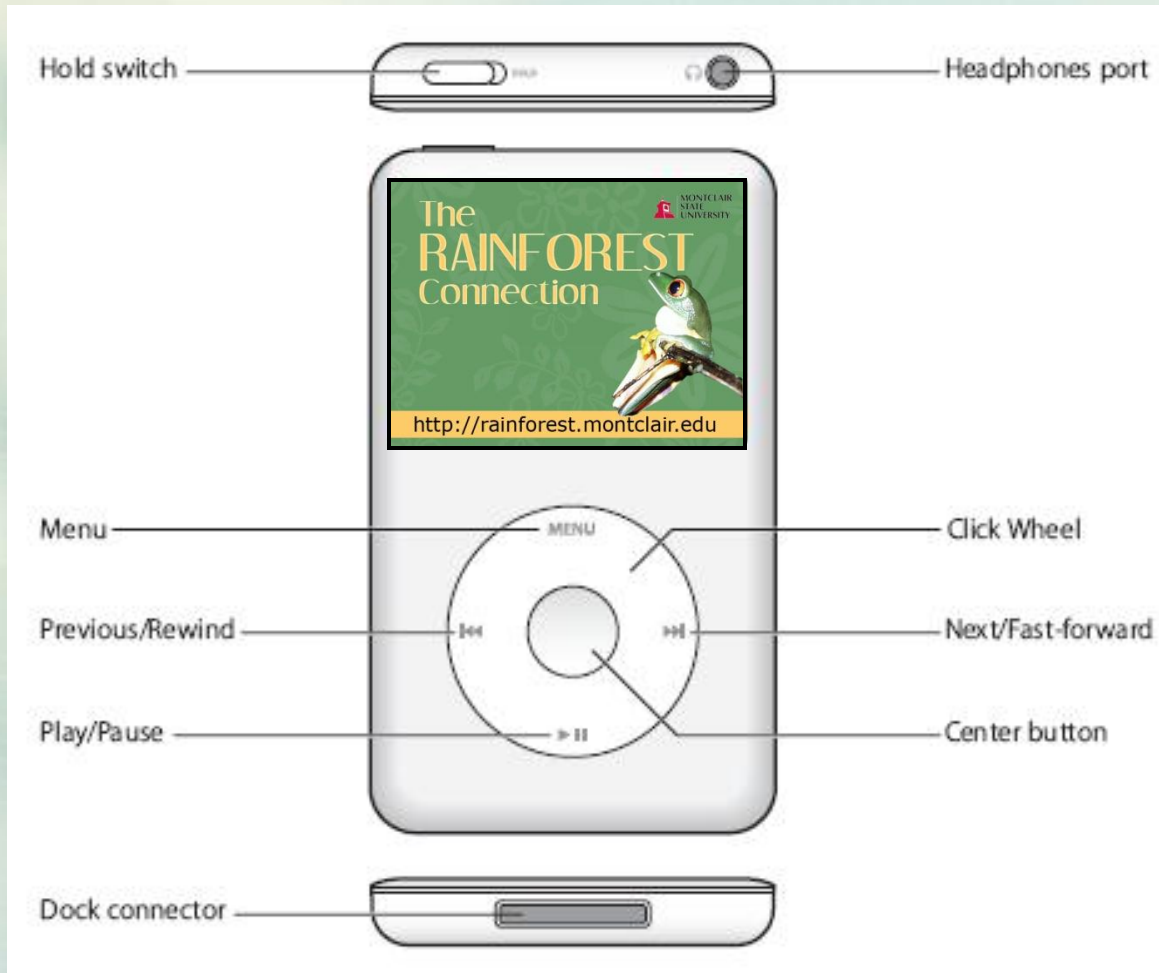
Previously discussed - included USB Charger

After market options:

- Dock
- Car Charger
- Plug
- Some speakers
- 3rd Party Converters



Button Controls



Three Buttons:

1. Hold switch
2. Select (center)
3. Clickwheel

Sleep/Hold Button

When “Hold” is on orange portion is visible



Conserve Battery Life

- Buttons won't accidentally be pushed
- iPod won't accidentally power on

On/Off Buttons

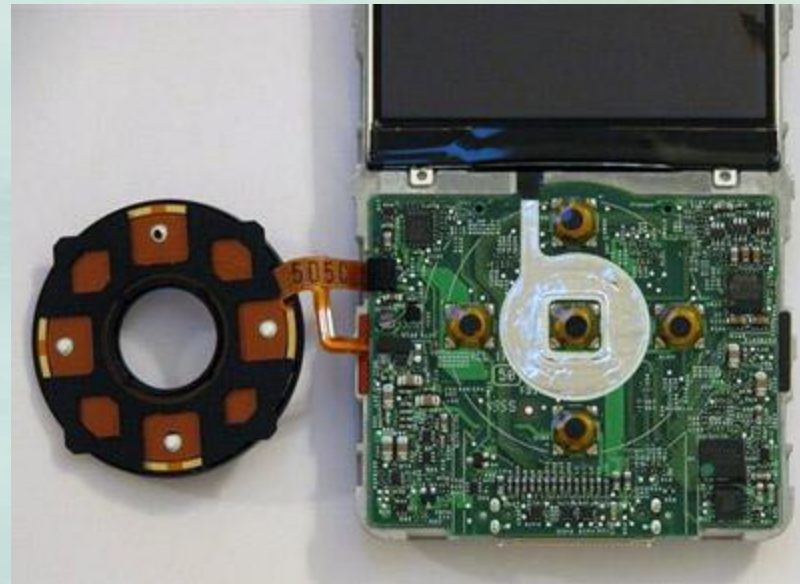
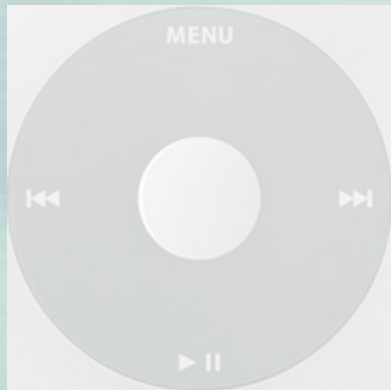
- Turning **on** your iPod
 - Press any button on the clickwheel



- Turning it **off**
 - Hold the Play/Pause button for a few seconds

The Click Wheel

- Stationary
- Touch Sensitive (akin to a laptop's touchpad)
- Has 4 buttons
- Controls Most iPod functions



Click Wheel As Navigator



Professional Resources in Science & Mathematics

PRISM

Clockwise Motion = Moves down a menu



Counter-Clockwise = Moves up a menu

To Select a Highlighted Item:

- Press **Select** (silver, center button on wheel)

Menu (top button) will exit to previous screen

Setting Date & Time



Setting Date & Time:

1. **Main Menu**
2. **Settings**
3. **Date & Time**

To set date in top (title) bar:

1. **Main menu**
2. **Settings**
3. **Date & Time**
4. **Time in Title (On or Off)**

Playing Songs, Videos, Podcasts



1. Use Clickwheel to select category (Music, Video, Photo, Podcast)
2. Enter category by using Select button (middle)
3. Files can be sorted by alphabetical order, genre, compilation, etc. Smart Search is also at bottom in order to search by name
4. Select file using middle button
5. File automatically begins playing

Volume Control

When a song or video is playing rotate around the click-wheel

- Clockwise will increase
- Counter-clockwise will decrease



Picture Slideshow



1. Select Photo Album
2. Select any thumbnail
3. Start Slideshow dialog will pop up
4. Select TV off/on
5. Select Button

Ways to control slideshow

- Menu button – Exits & Returns to main
- Play / Pause button

PowerPoint Presentations



AV Cables connected to projector or television

In PowerPoint

- Save presentation as .jpg
- File > Save As > .jpg



On iPod

- Open presentation as a slideshow
- Use play/forward/pause for control
- Music can play during
- iPod remote optional

Podcasts/Slideshows on TV/Projectors



AV Cables or Universal Dock

- Plugs into headphone jack / dock connector
- Standard AV Out cables
 - (same as dvd, vcr)



iPod Settings

1. Scroll to Video Settings
2. TV Out (set to on)



Voice Memos

Requires: External microphone



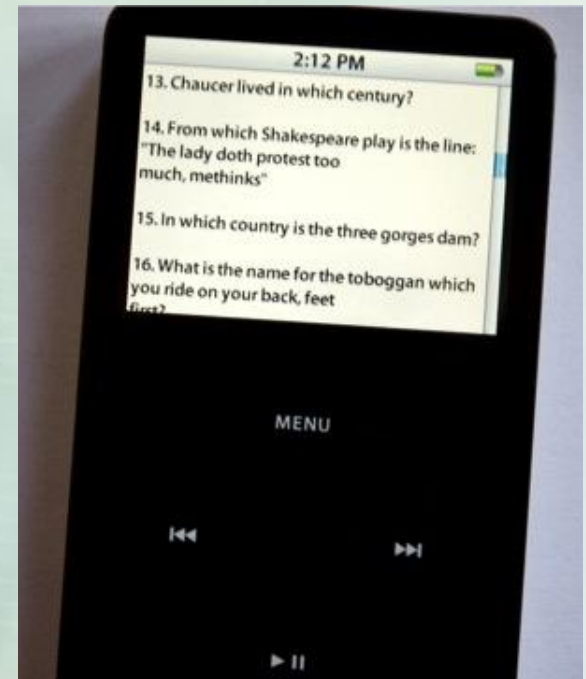
1. Connect microphone to Dock connector (bottom)
2. Set Quality to Low or High.
3. Press Record.
4. Hold the microphone a few inches away and speak. To pause recording, choose Pause.
5. When finished, choose Stop and Save. The saved recording is listed by date and time.

Notes

1. Save a document in any word-processing application as a text (.txt) file
2. Place the file in the Notes folder on iPod

To view notes:

Main Menu > Extras > Notes



Setting the Alarm

1. Extras Menu
2. Alarm
3. Turn the alarm on
4. Set the time
5. Set the date
6. Choose a sound (tones or playlist)
7. Select a repeat action (ie: weekdays)



Note:

If you select a playlist alarm the iPod must be connected to speakers or headphones in order to hear sound

Stopwatch



1. Extras > Stopwatch.
2. Press Play/Pause to start
3. Press the Center button to record.
 - Up to three lap times show beneath the overall time.
4. Press Play/Pause to stop overall timer or choose Resume to start again.
5. Choose New Timer to start a new session

Note:

Once the stopwatch is started it will remain on as long as the timer screen is displayed. If you go to another menu without playing music or video the stop watch will idle and turn off.

On the Go List



Adding Song

- Find song
- Click & Hold Select button (center)
- The song will blink twice

Removing Song

- Open On the Go list
- Click & Hold Select until it blinks

Next time you synch iTunes will display list

Other Listening Options



Speakers

- Either through ipod dock, station or male/male AV cable

Car

- Line in/out Aux Port
- Cassette Adapter
- Radio Station Transmitter
- Wireless built in



<http://www.apple.com/ipod/carintegration/>